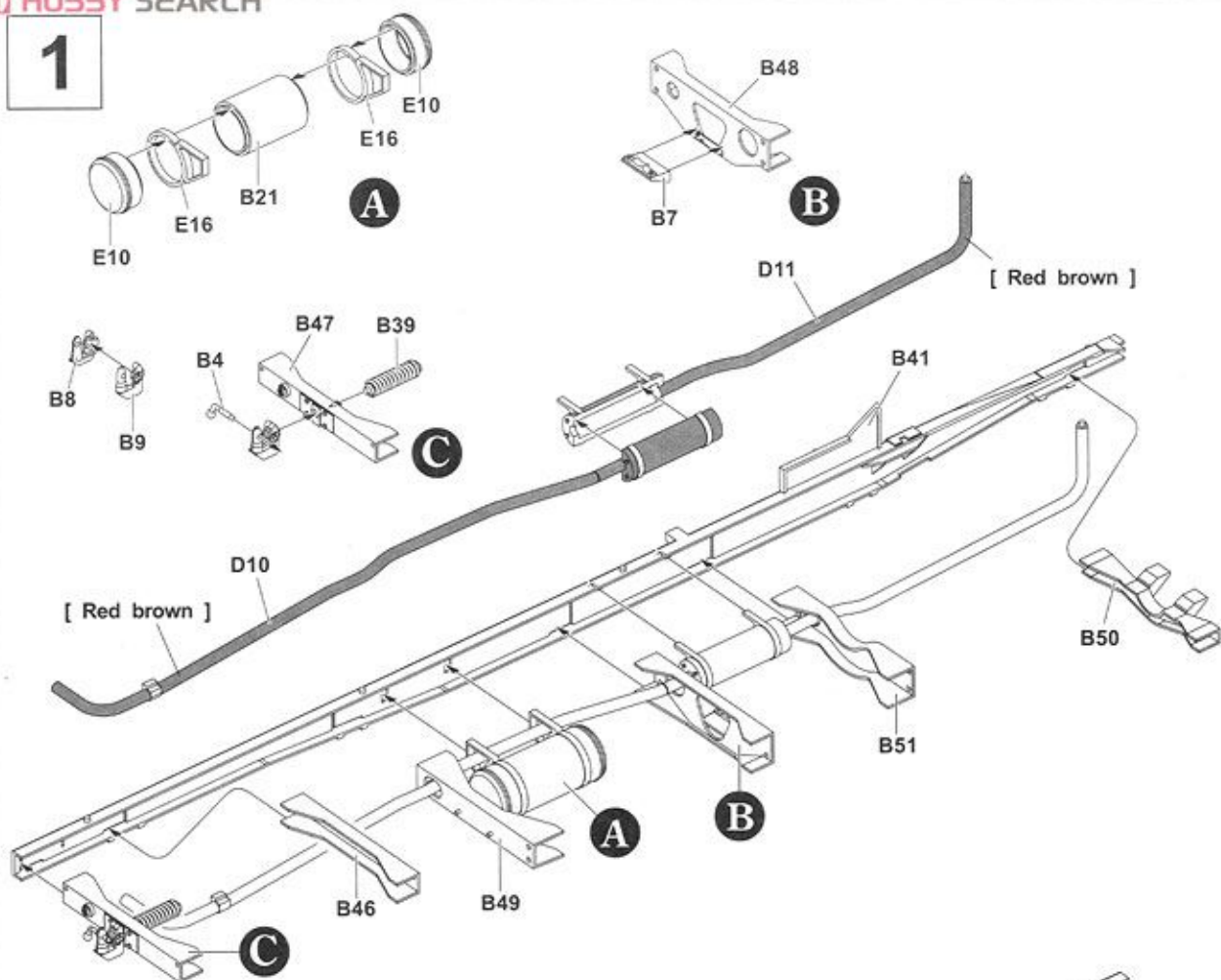


In mid-1930s, to lessen logistics burden, the German Army tried to standardize the chassis for truck. Three levels-light, medium, and heavy, chassis were standardized so that motor manufacturers can utilize their own engines and gearboxes on said standardized chassis. Five major standardized chassis were completed.

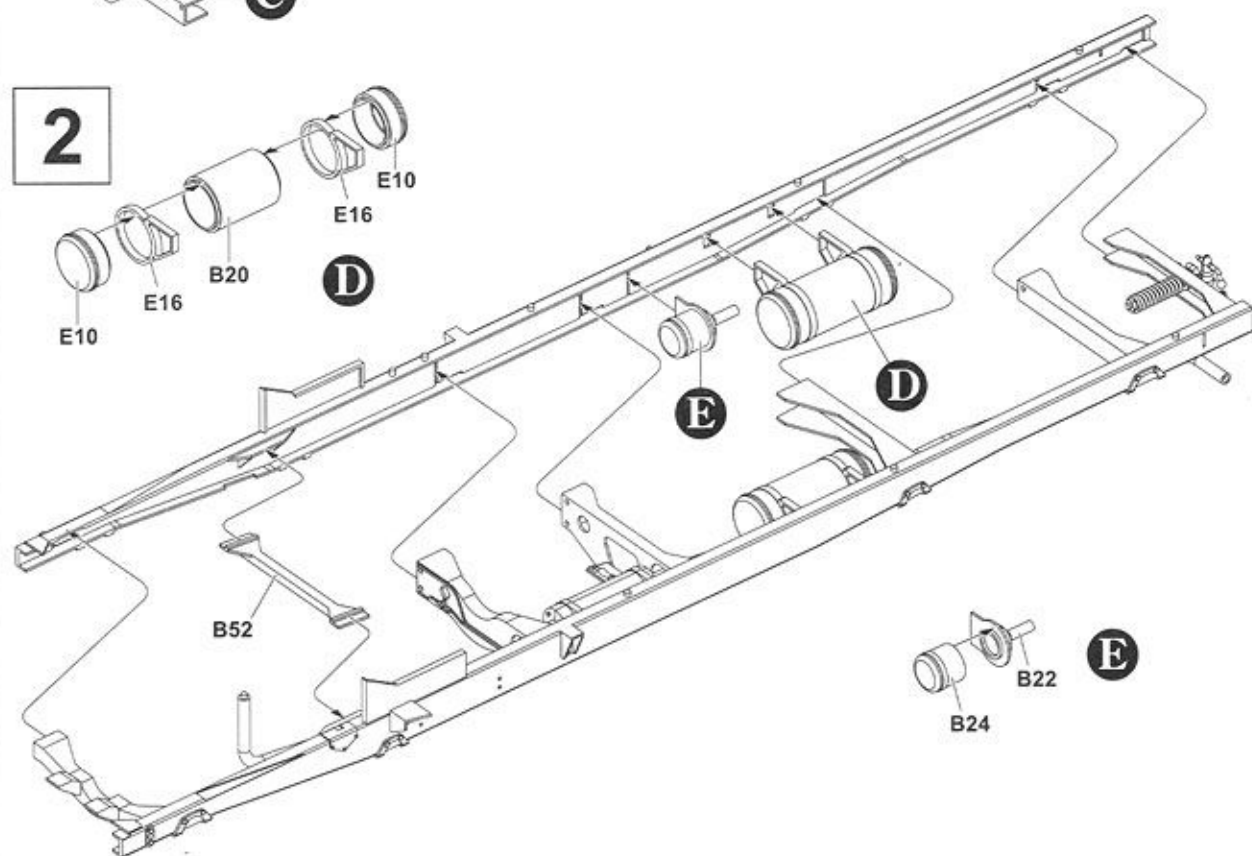
Established in 1903, Büssing-NAG mainly produced buses and trucks in Germany. Expropriated by the government in 1933, the company was made dedicated to produce over 4.5-ton military trucks. The lightest ones among this series, 500A (4-wheel drive) and 500S (2-wheel drive), both utilized 150 HP 6-cylinder diesel engines. Produced from 1938 to 1941, German Army standardized chassis and driver compartment were adopted. Derivative models, 4500A and 4500S were introduced in 1942. Based on identical specification to 500A/S, 4500A/S might have slight differentials in appearance. To fulfill various combat needs, there were further specialized modifications based on 4500A/S chassis. There were several simplified models on later stage in the war to save up material and production procedure.

The production for Büssing-NAG 4500A/S did not cease until end of the war, and a total of 15000 was produced for all 500 and 4500 series.

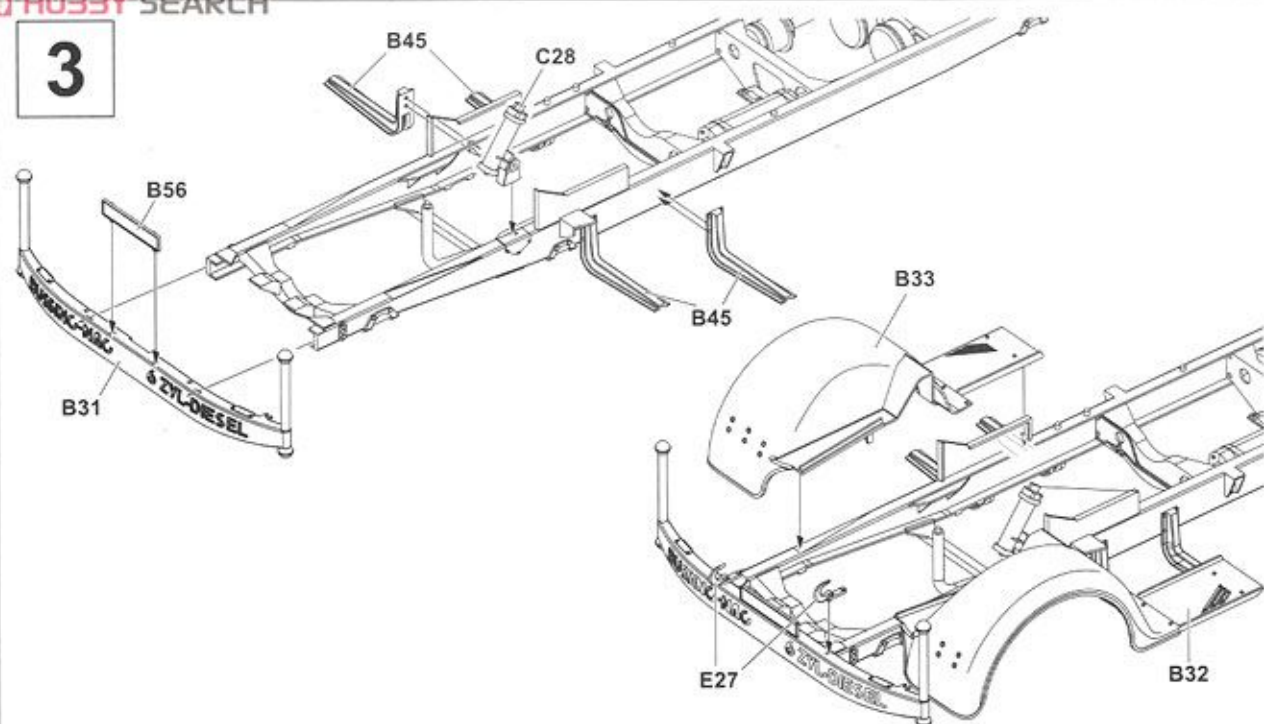
1



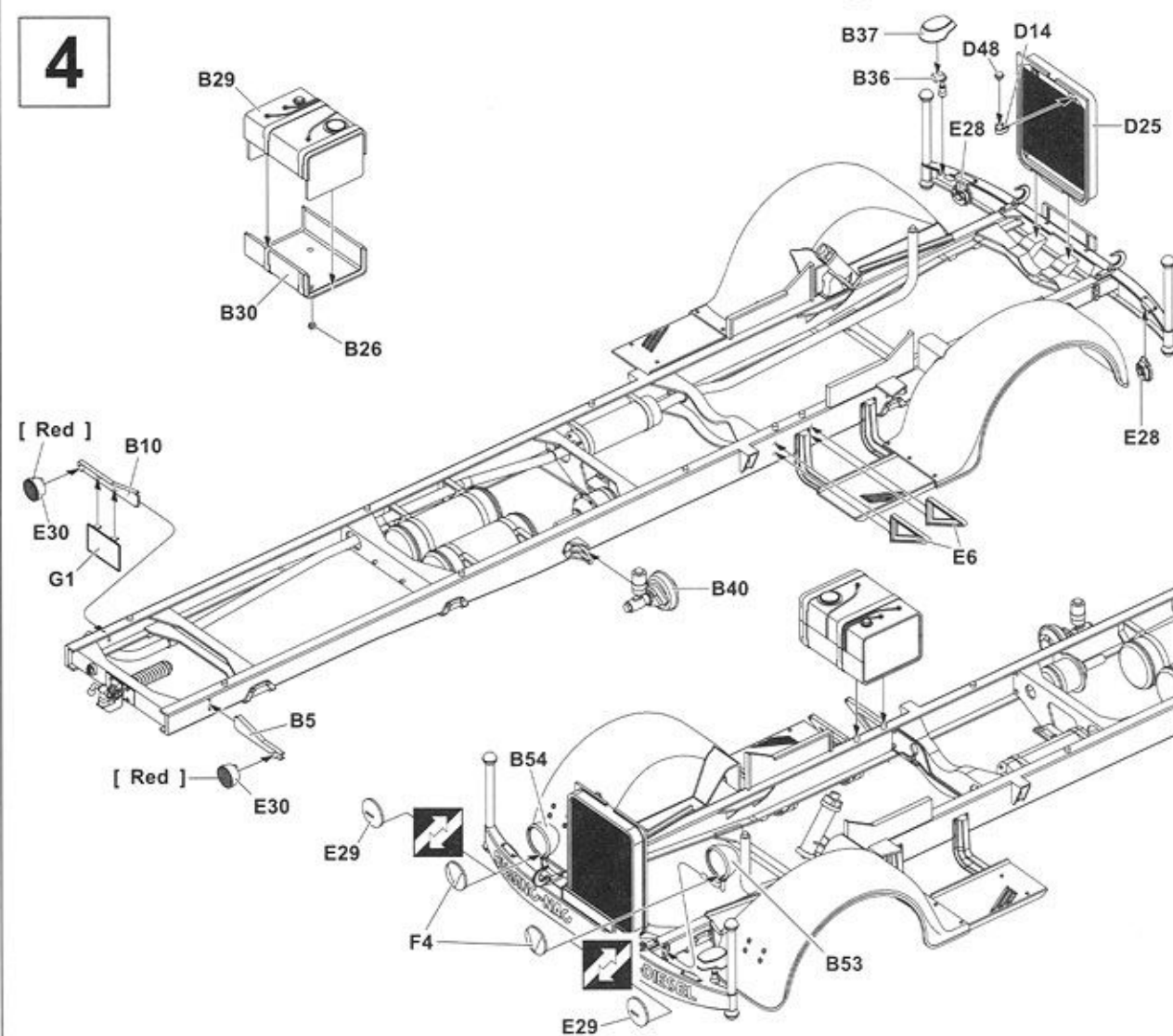
2



3

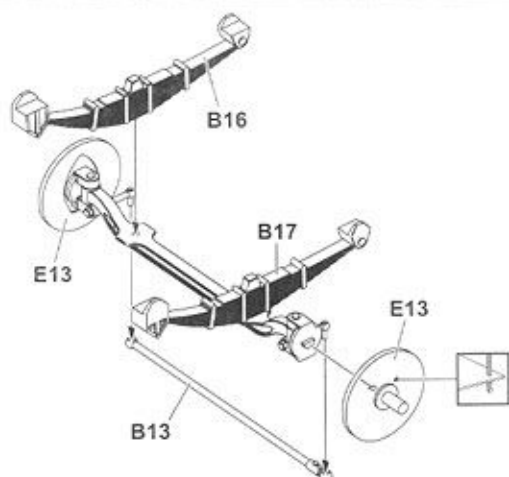
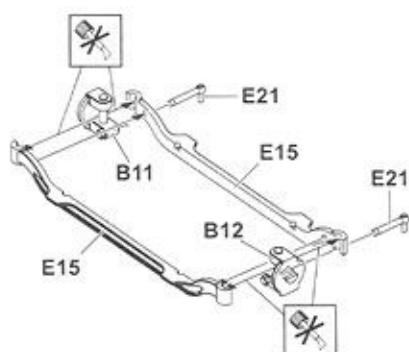


4

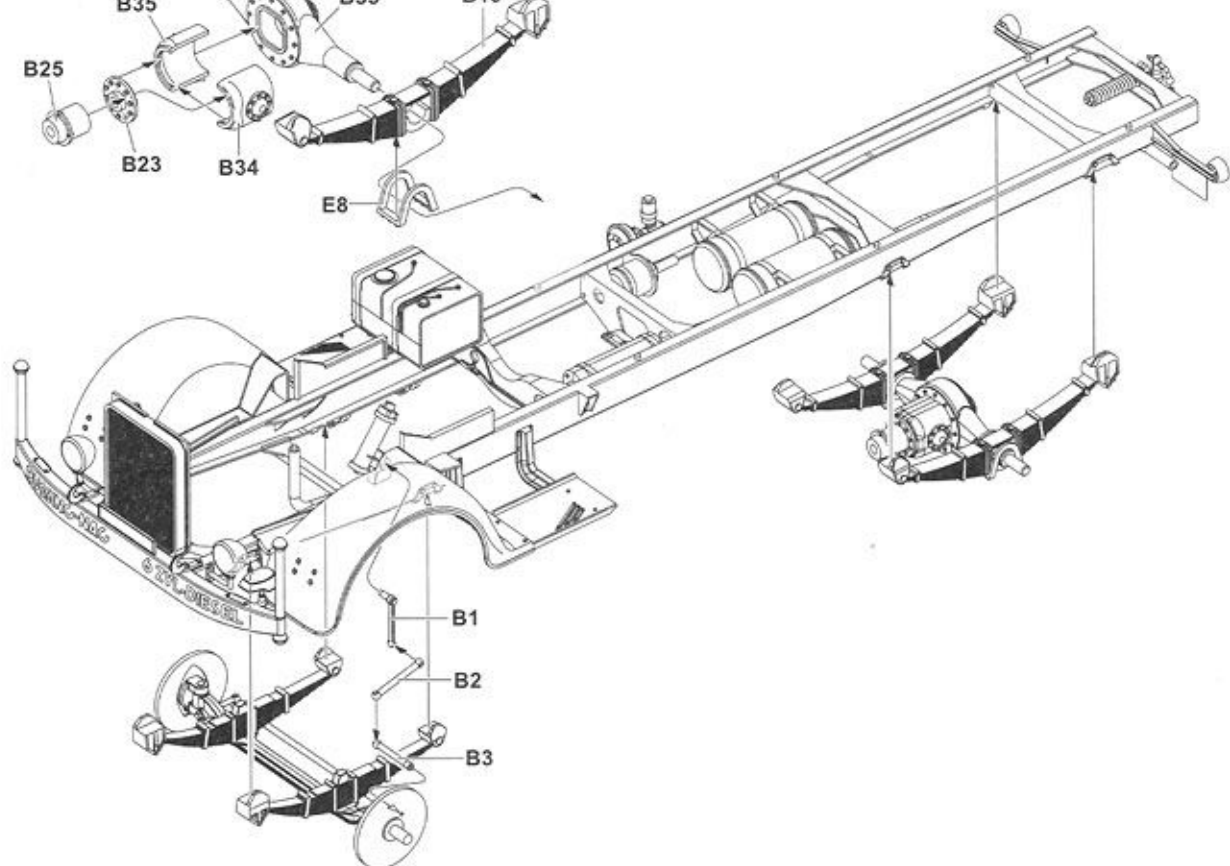
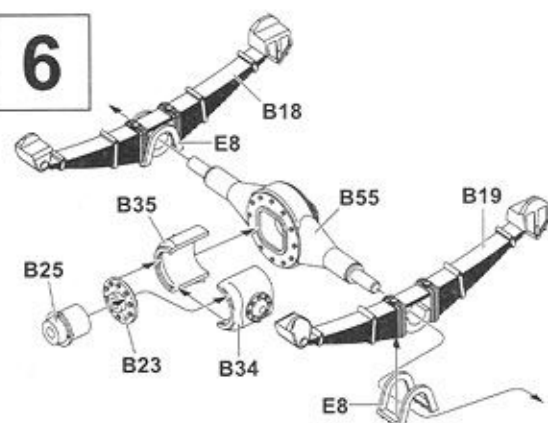




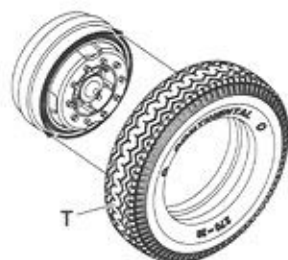
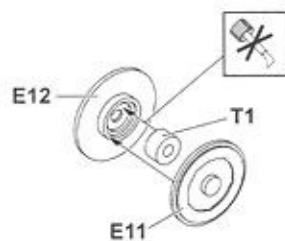
5



6

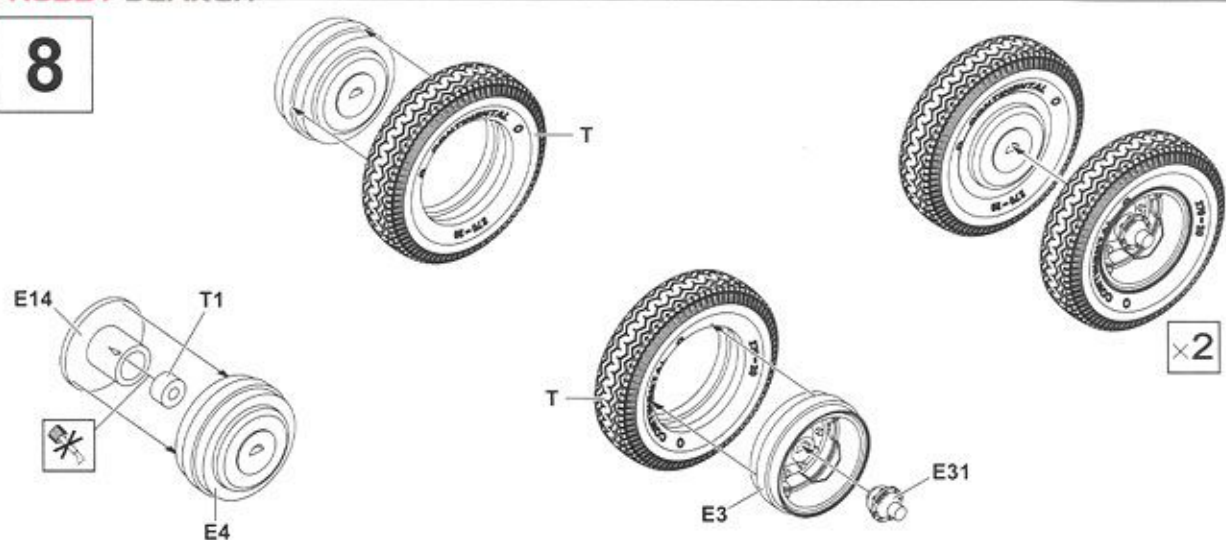


7

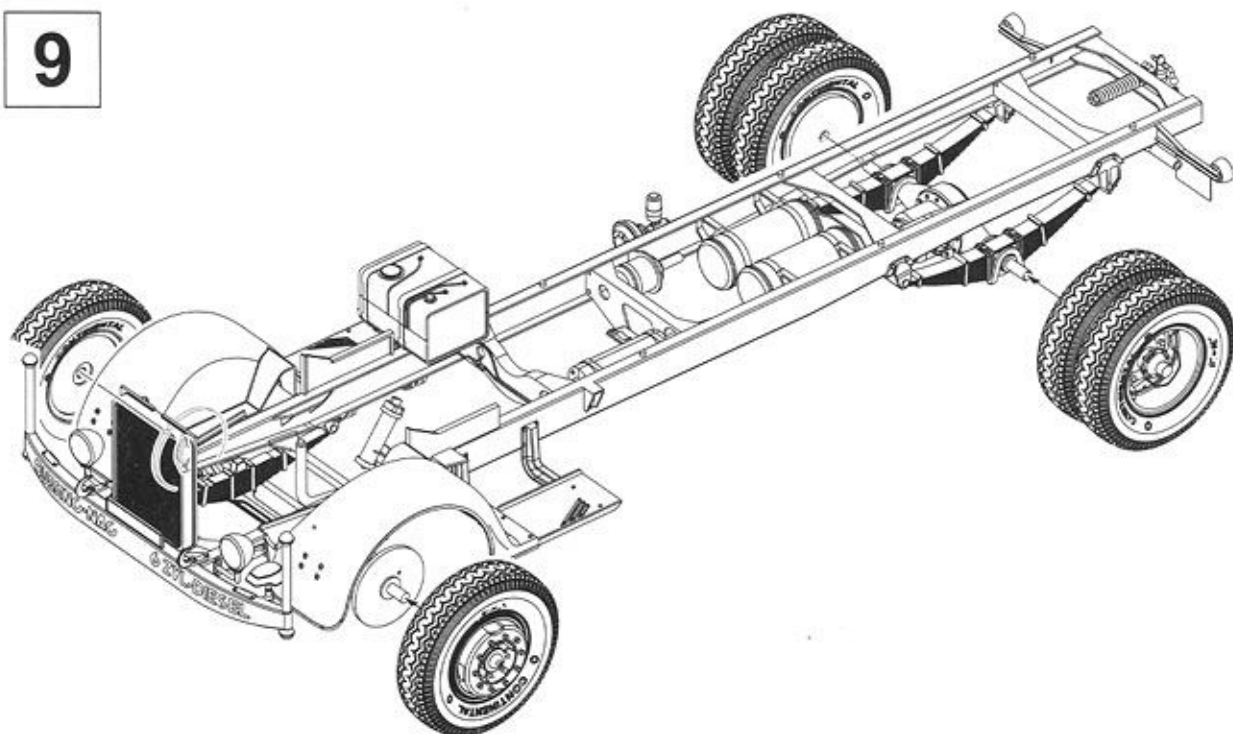


×2

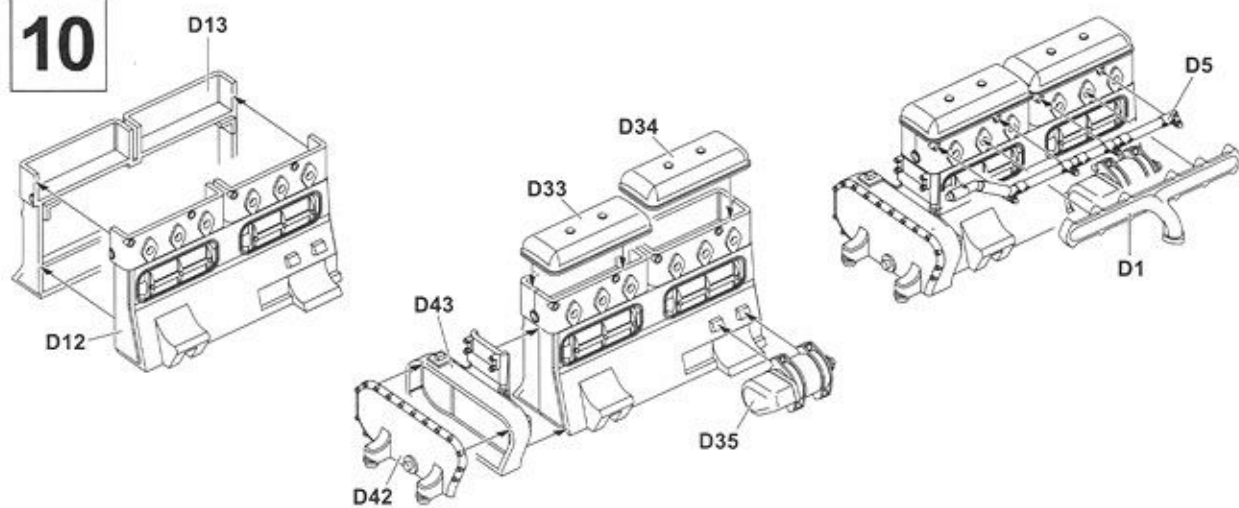
8



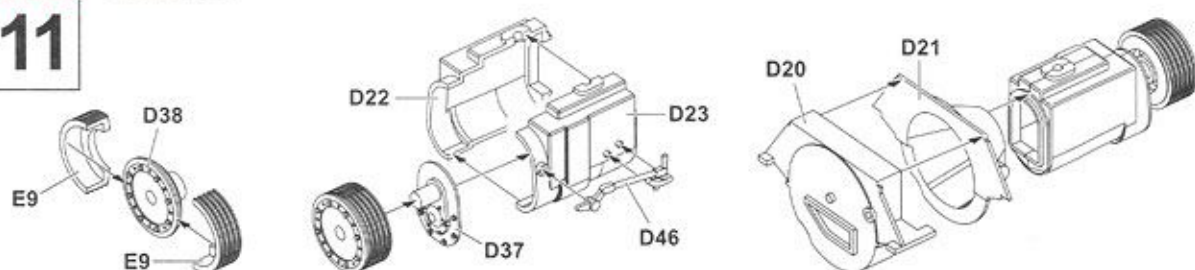
9



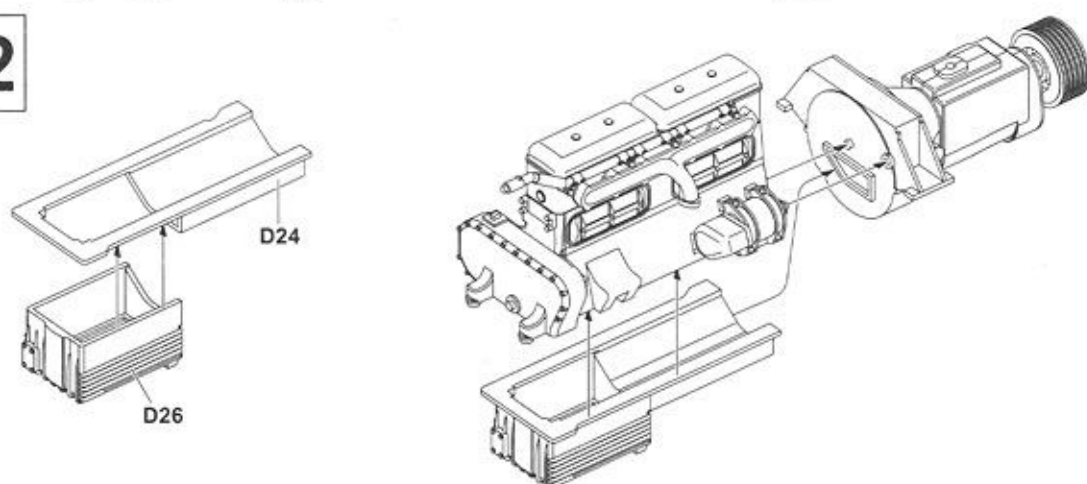
10



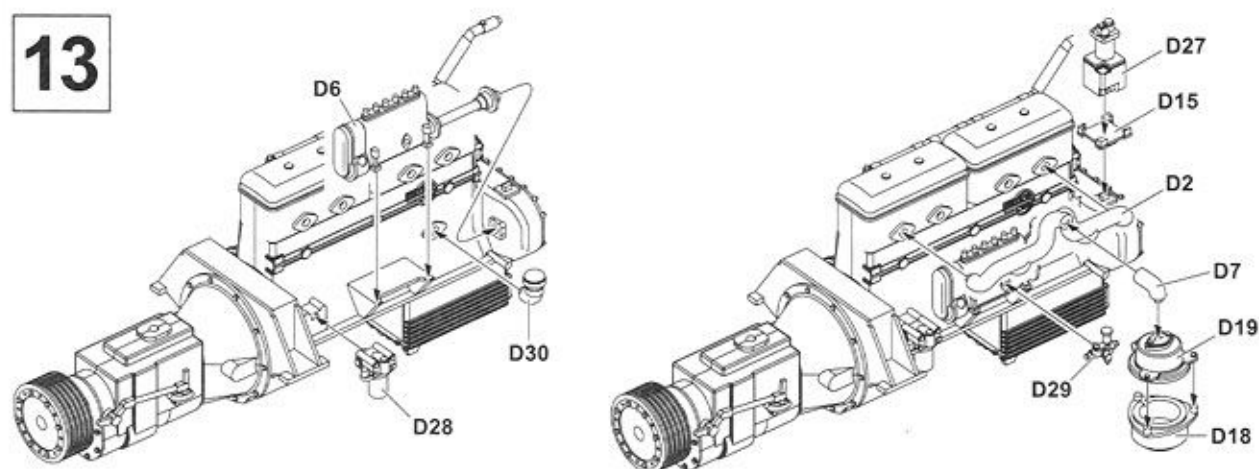
11



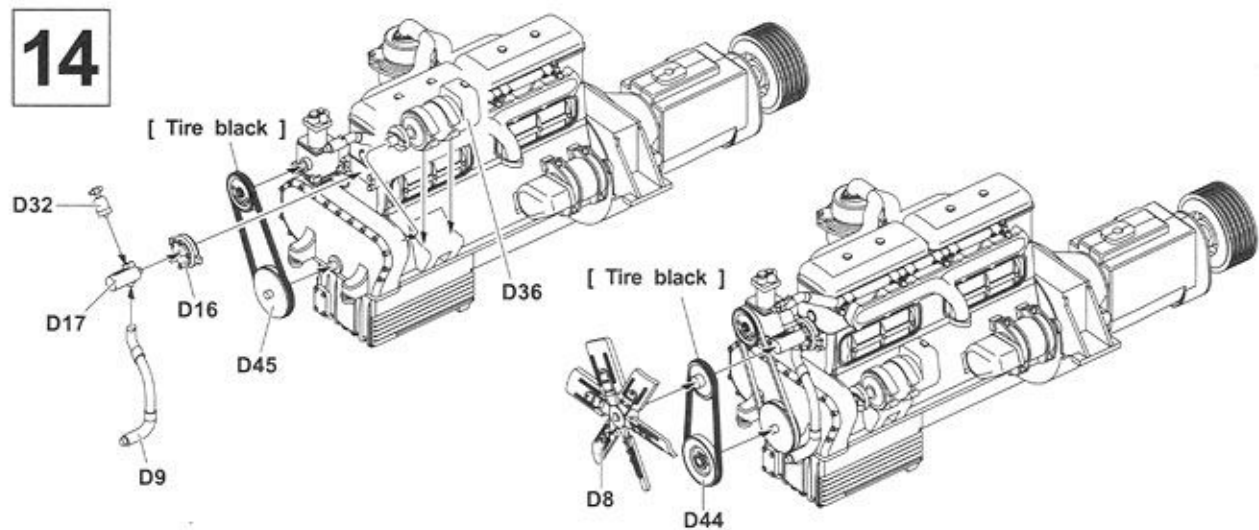
12



13

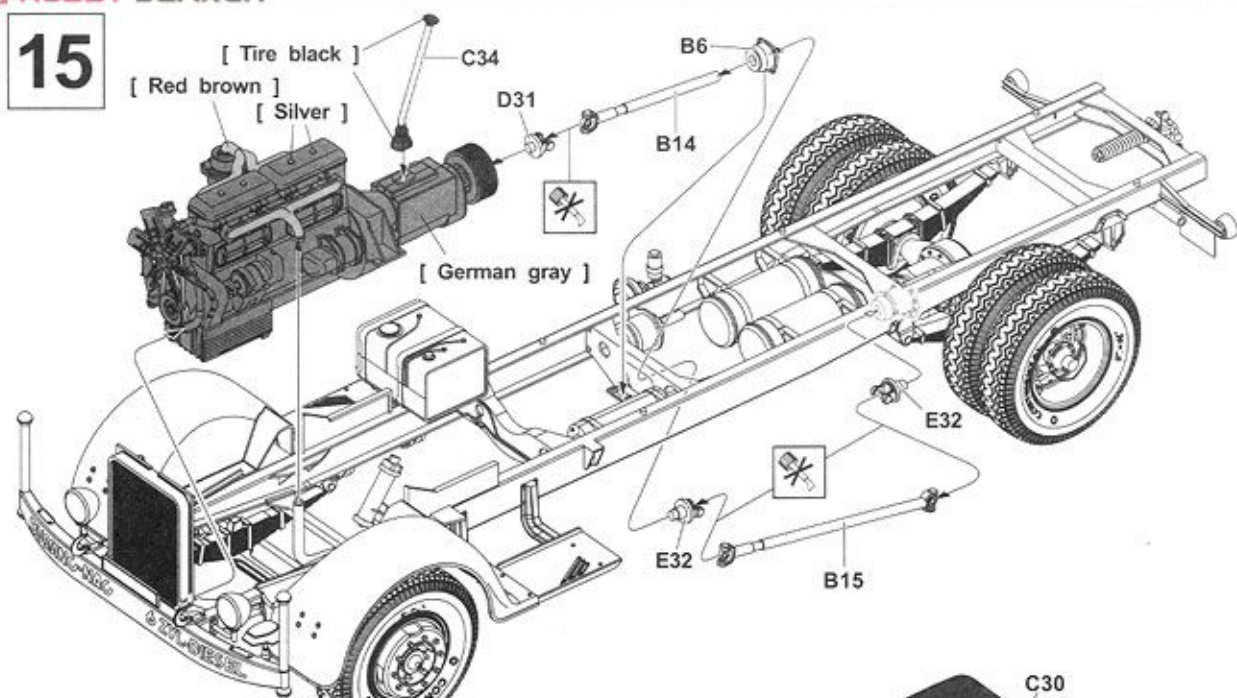


14

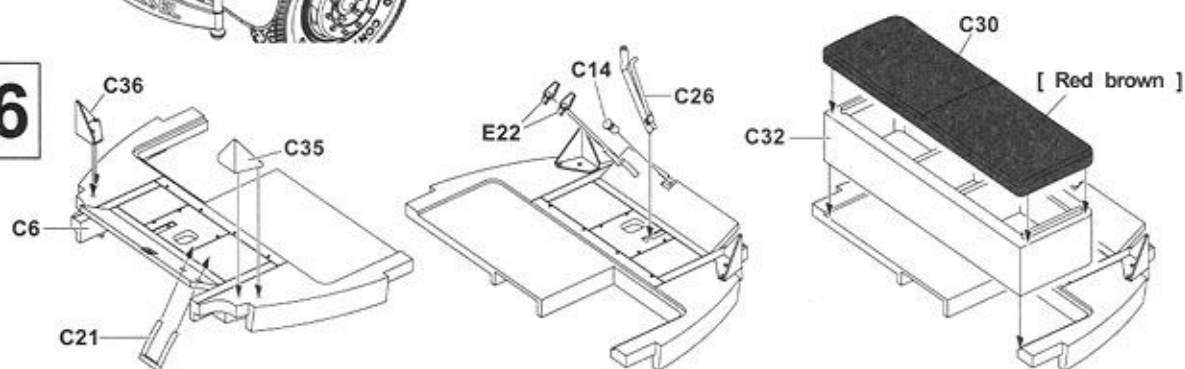




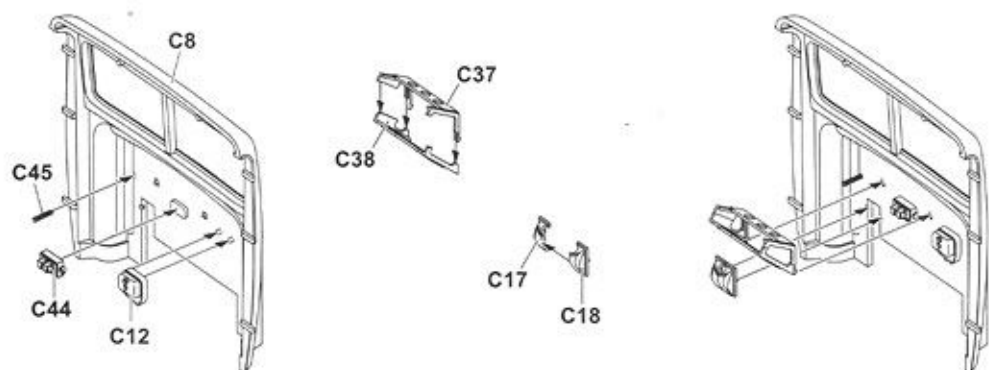
15



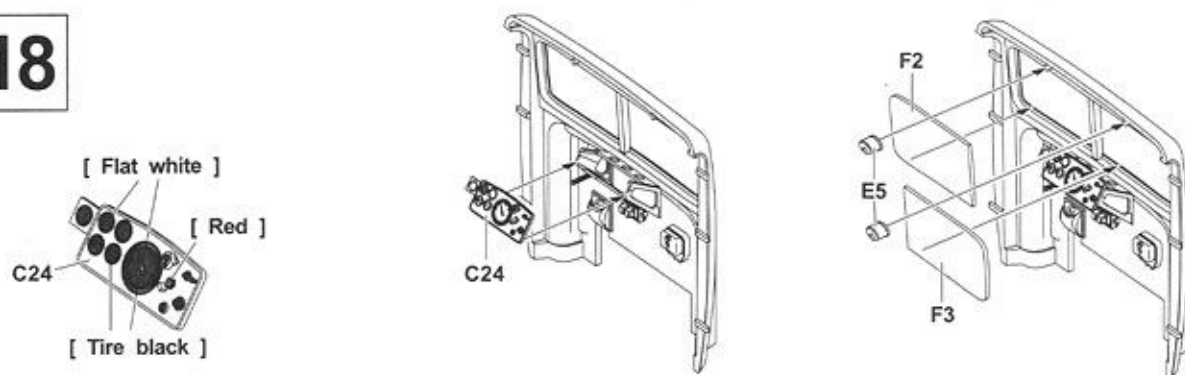
16



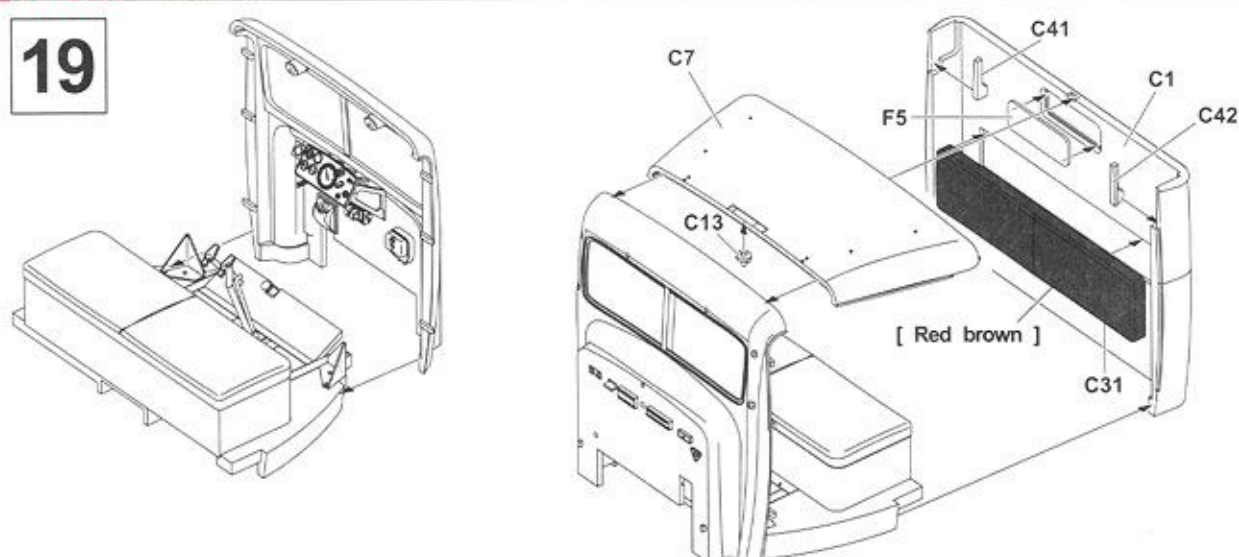
17



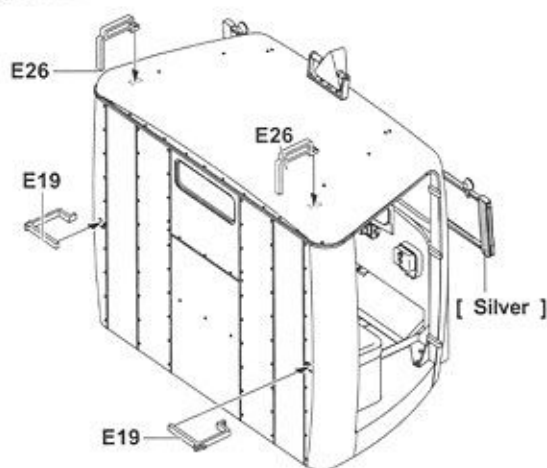
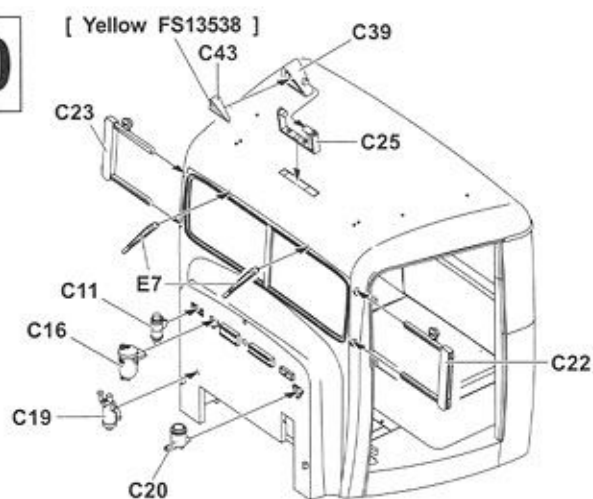
18



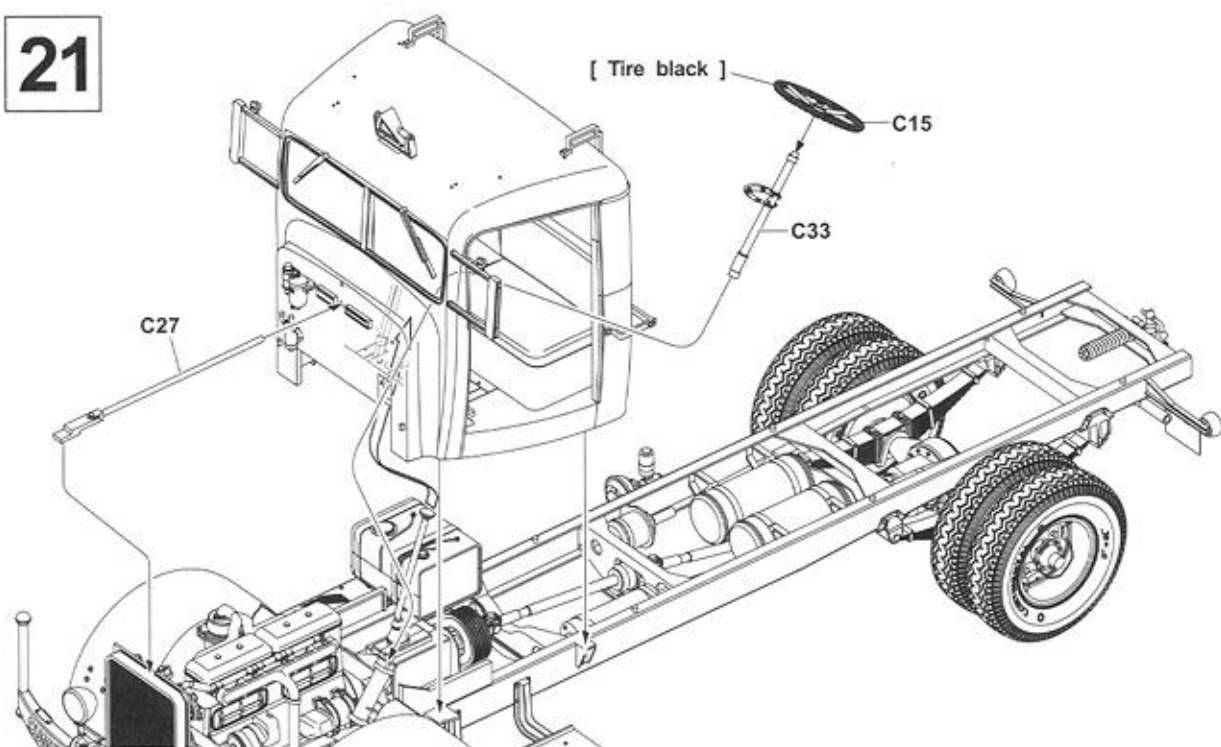
19



20

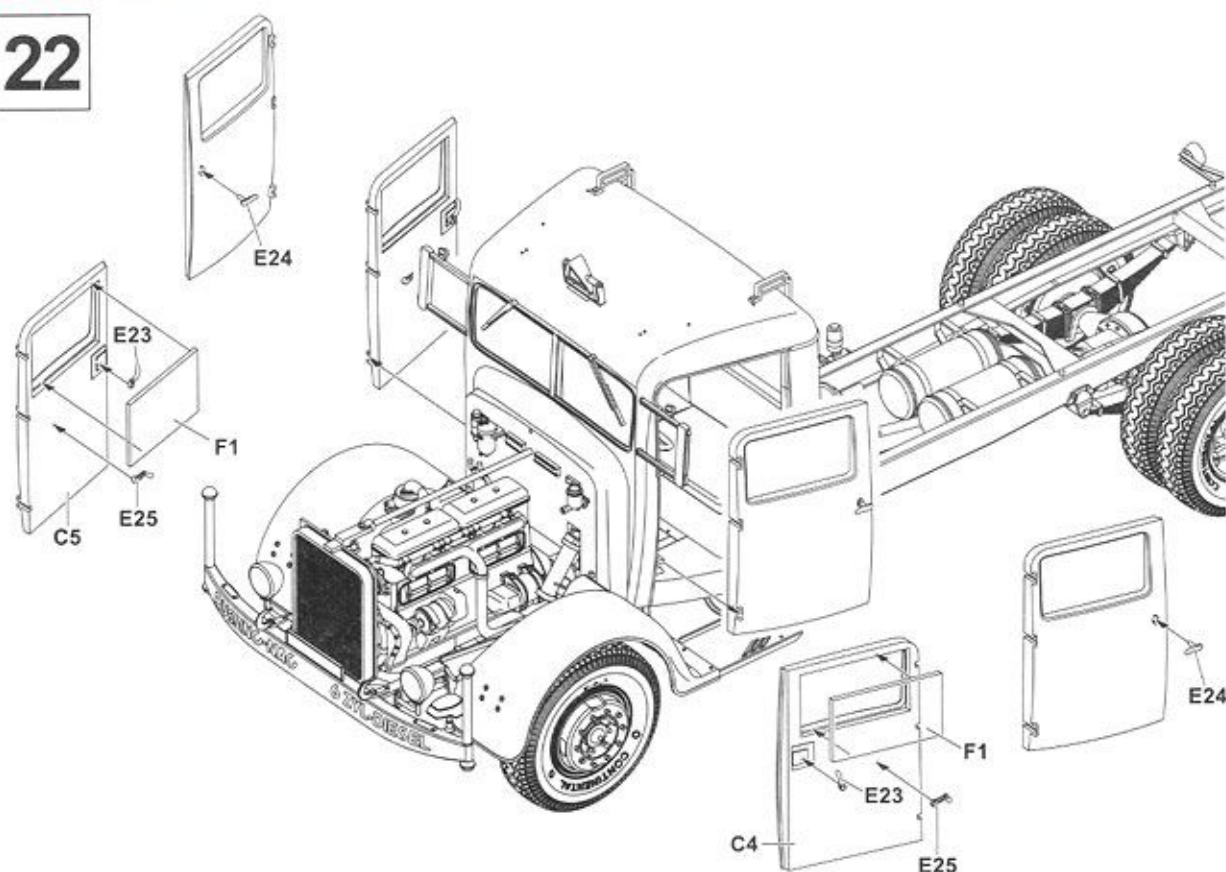


21

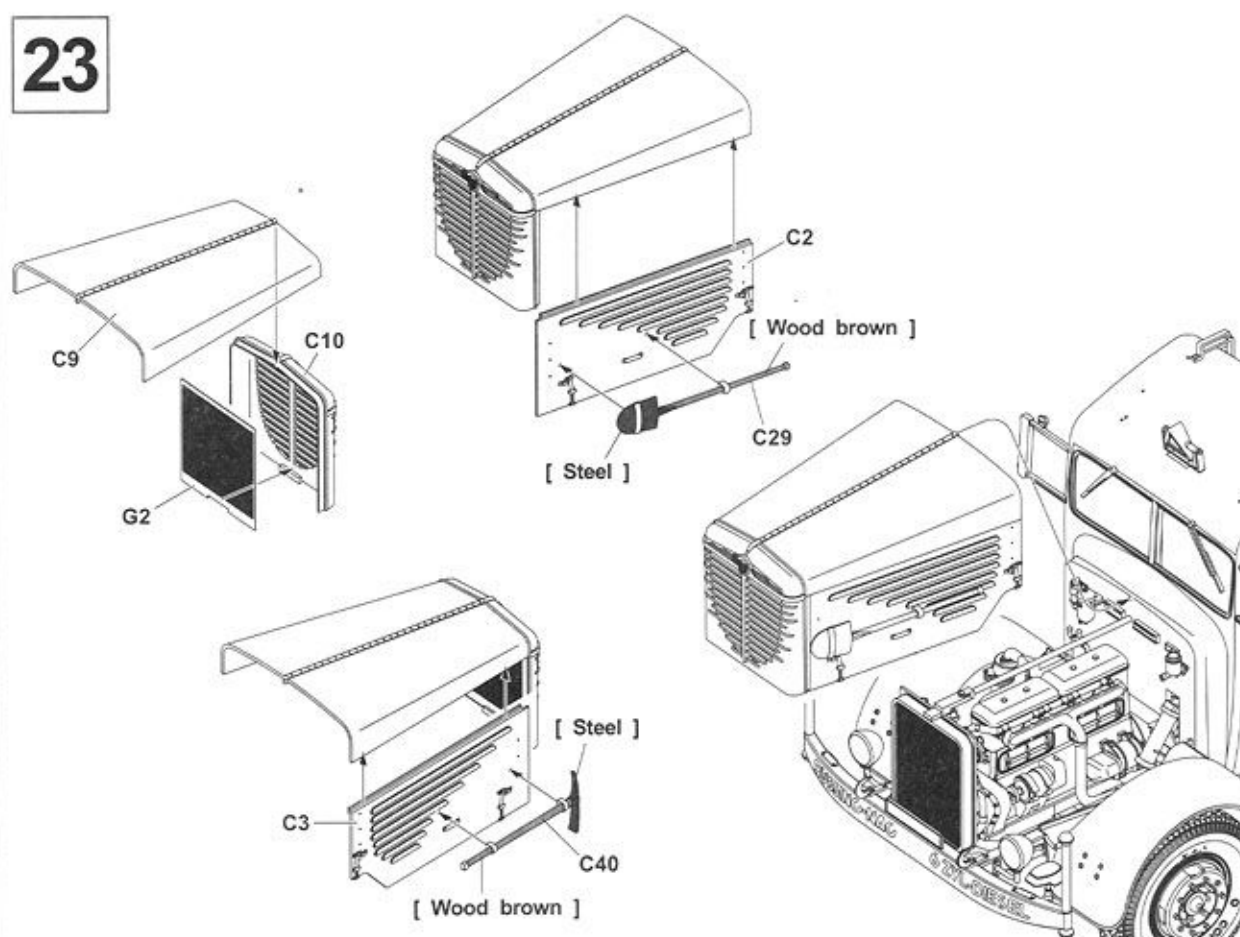




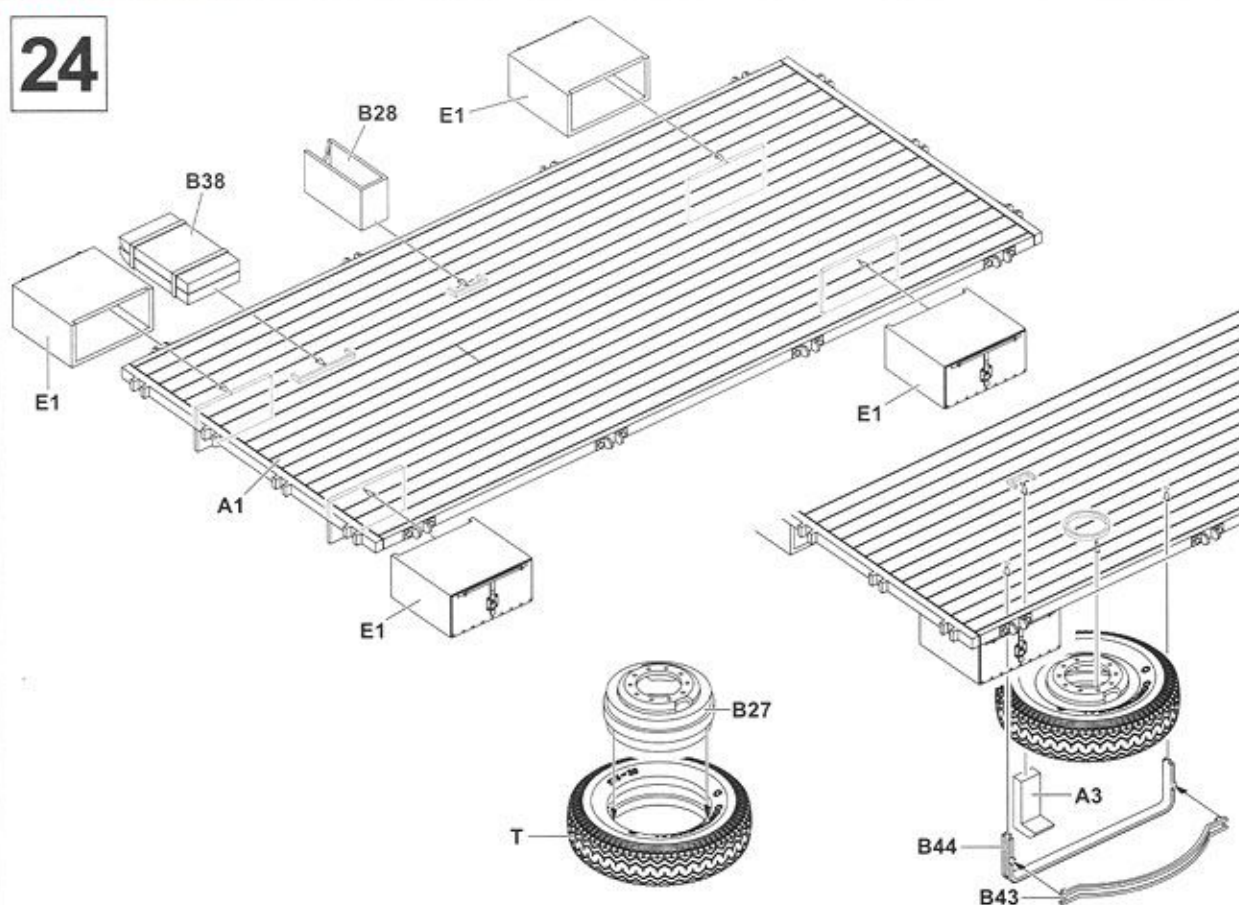
22



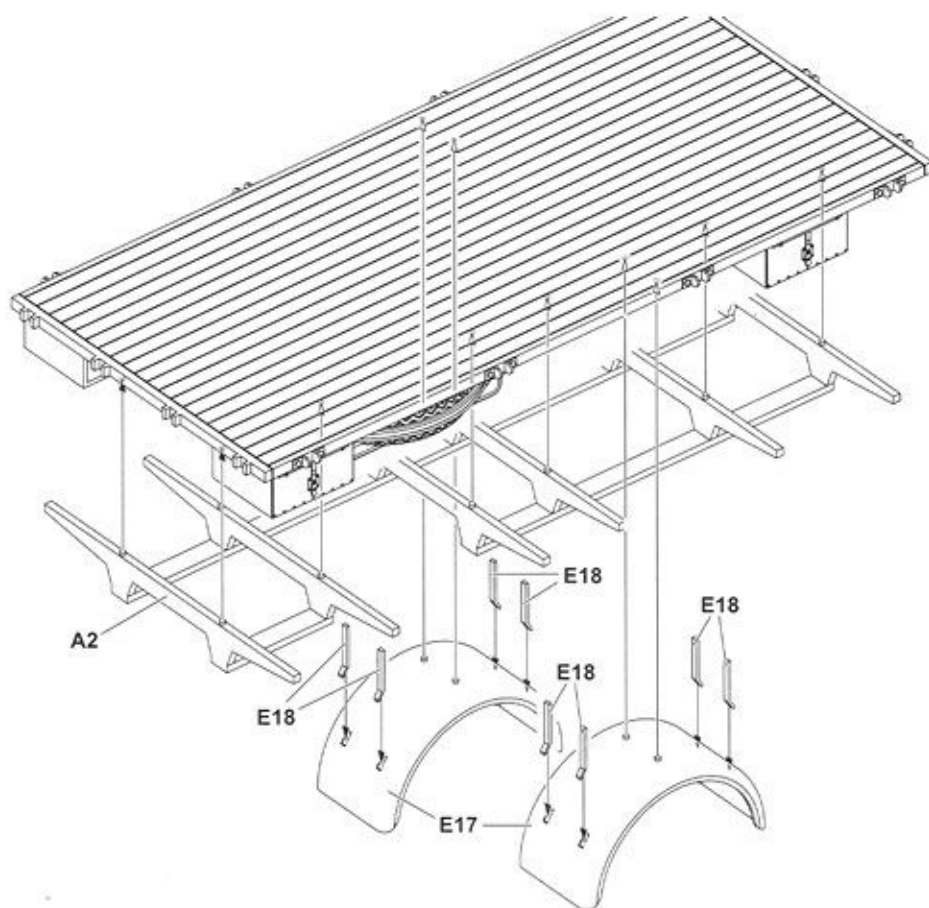
23



24

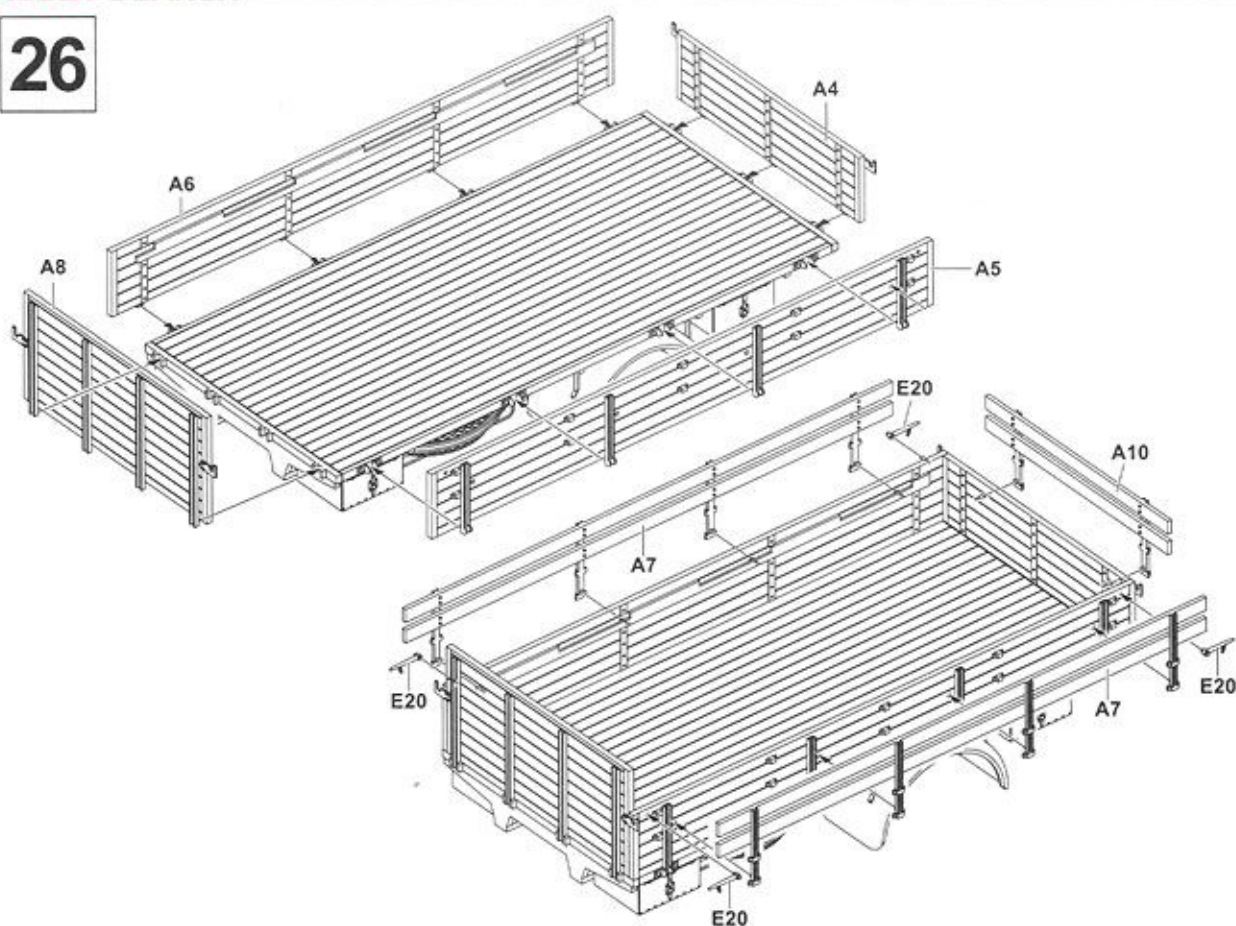


25

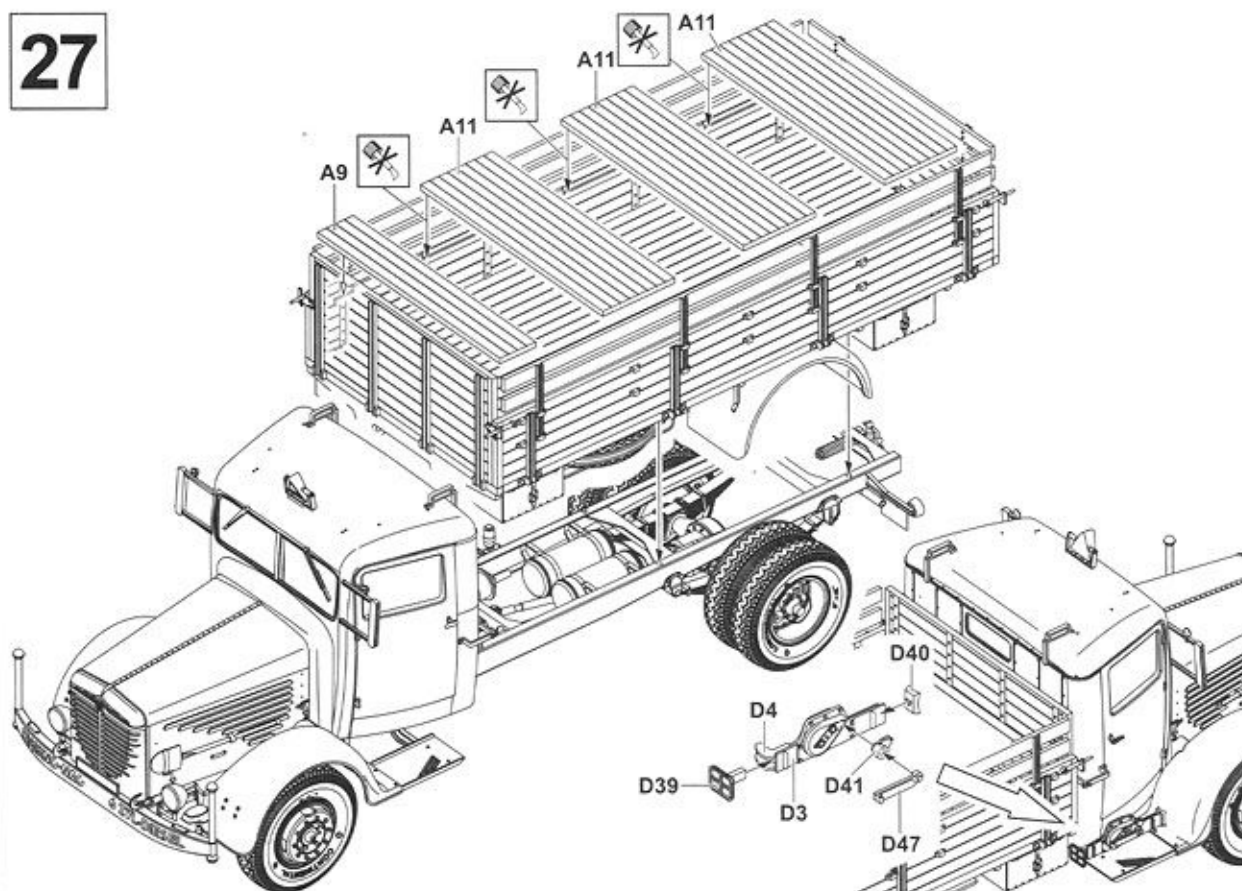




26



27

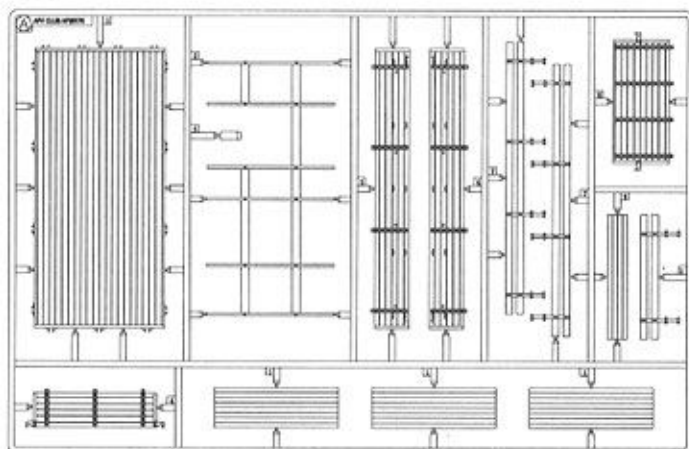




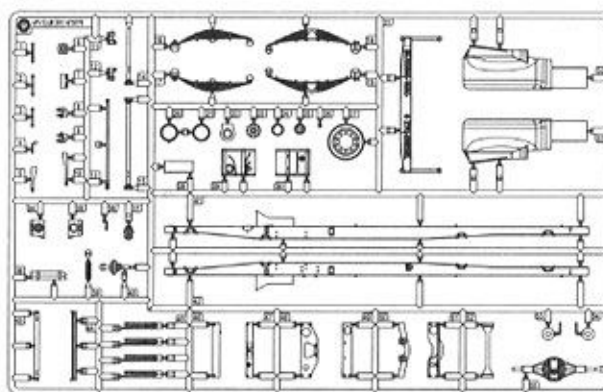
# PARTS LIST 零件表

**A X1**

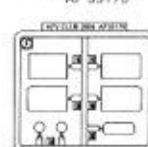
AF 35170


**B X1**

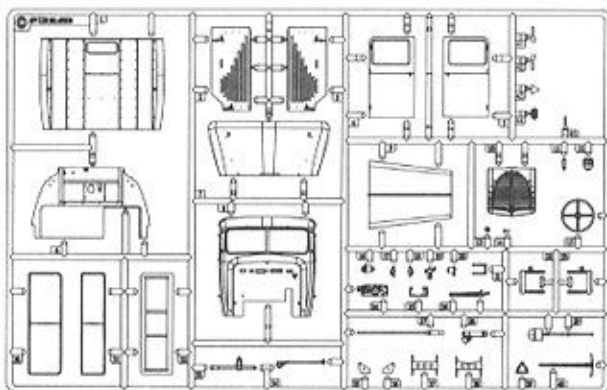
AF 35170


**F X1**

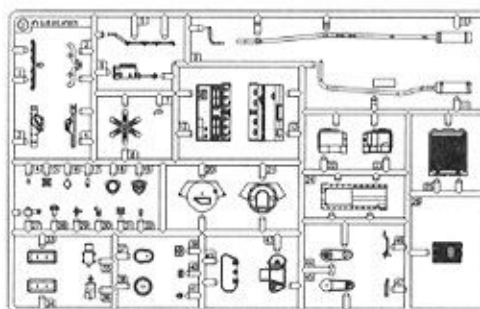
AF 35170


**C X1**

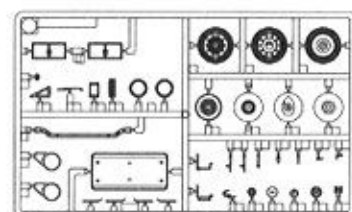
AF 35170


**D X1**

AF 35170


**E X2**

AF 35170


**T X7**

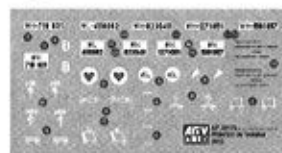
AF 35170


**T1 X1**

AF 35170


**J X1**

AF 35170

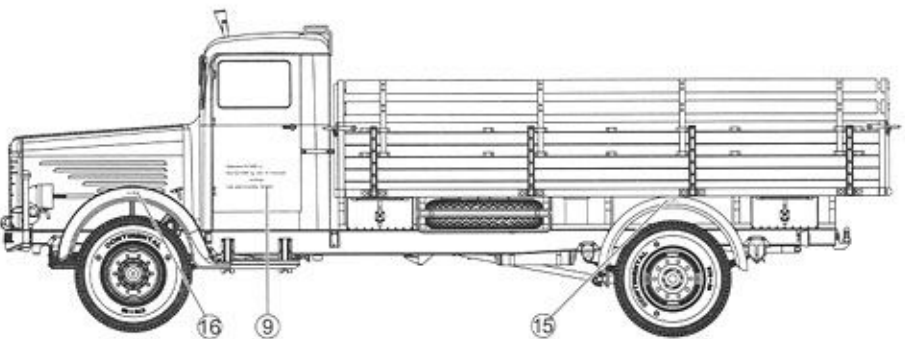
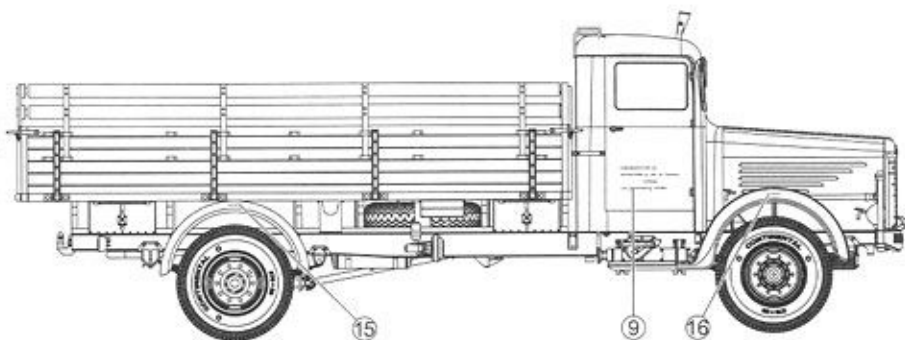

**G X1**

AF 35170



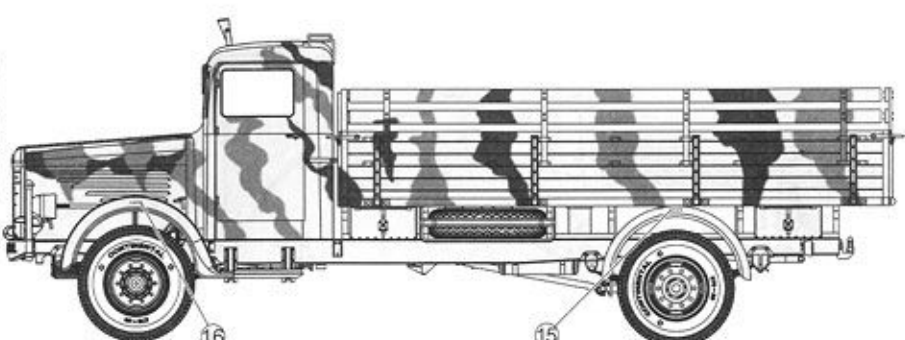
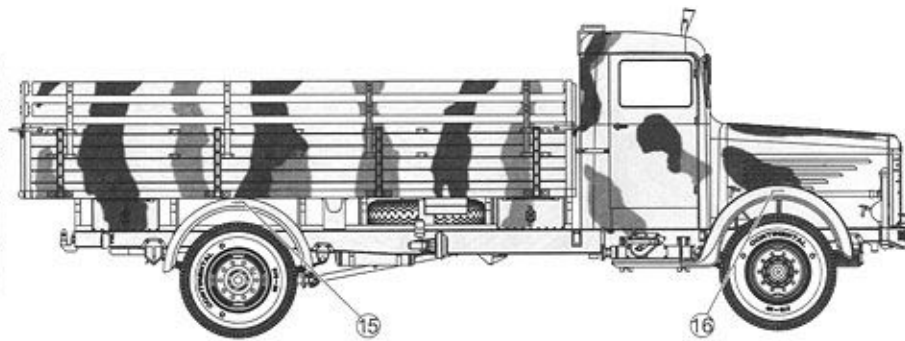
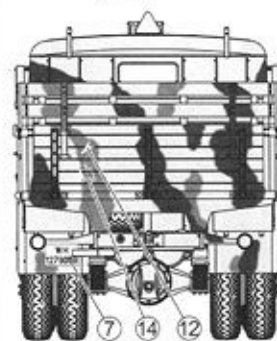
# **A** 320th Infantry Division 第320步兵師

Body Color: German gray



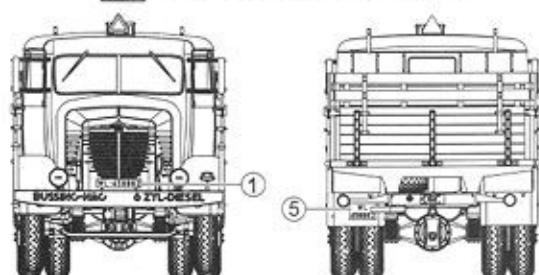
# **B** 4th Panzer Division, Kursk 1943 第四装甲師, 1943年庫斯科

Body Color: Red brown Dark green Dark yellow




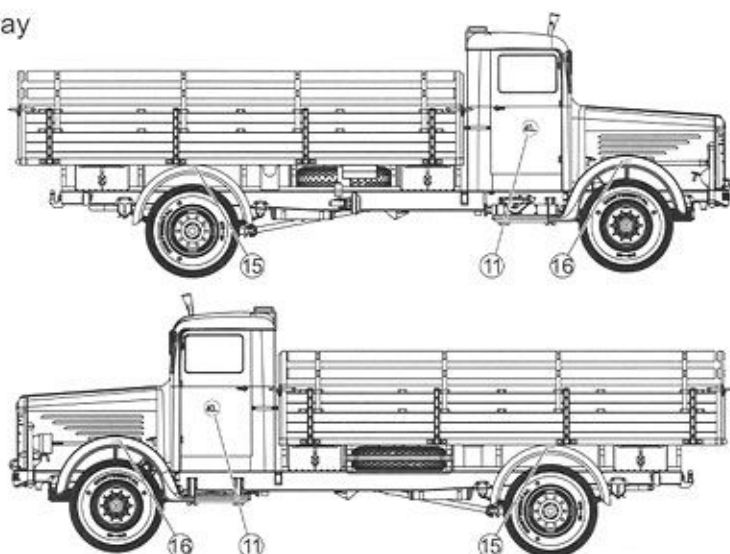
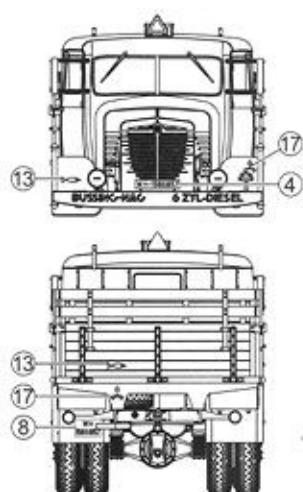
# C

Luftwaffe  
德國空軍

 Body Color: Dark yellow



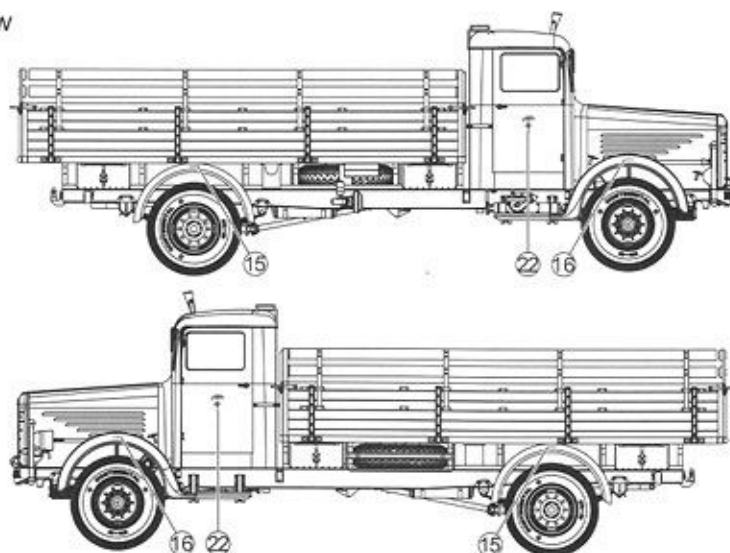
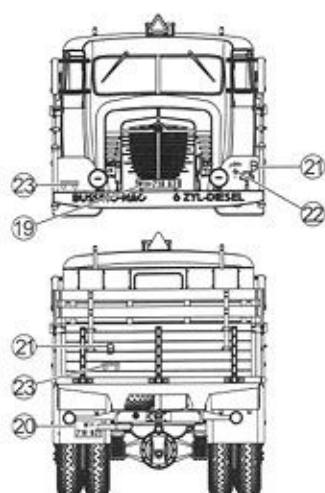
# D

35th Infantry Division  
第35步兵師

 Body Color: German gray


# E

21st Panzer Division, North Africa  
第21裝甲師, 北非

 Body Color: Dark yellow




## Color list: 塗料表

Color	Brand	Gunze Sangyo			Humbrol	Revell	Lifecolor
		Hobby Color	Mr.Color	Mr.Color Spray			
German gray	德國灰	H32	C40	J40	92	79	UA073
Red	紅	H3	C3	J3	19	31	LC56
Red brown	紅褐	H47	C41	J41	160	383	UA085
Sandy yellow	砂黃	H79	C39	J39	83	16	UA081
Silver	銀	H8	C8	J8	11	90	LC74
Steel	黑鐵	H18	C28	J28	53	91	LC76
Tire black	輪胎黑	H77	C33+C62		85	302	LC02
Wood brown	木棕	H37	C43		169		FS12
Yellow FS13538	黃	H329	C329		188		LC53